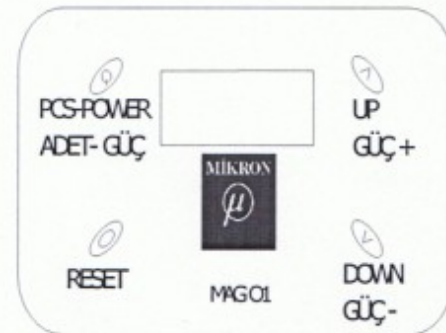
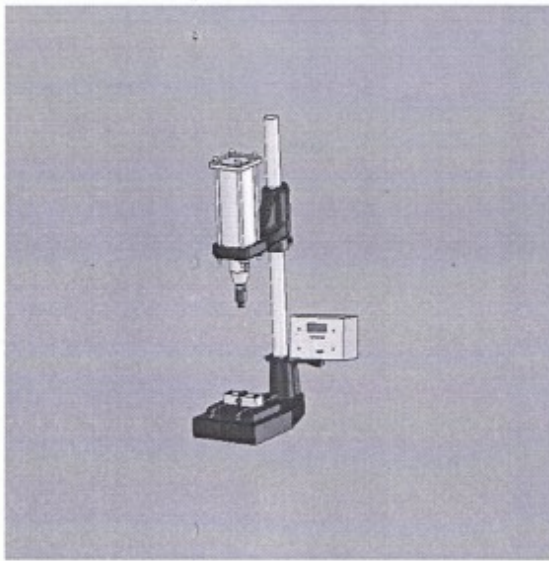


## MAG-01 MIKRON MAGNETIC PRESS

MAG-01 is designed for assembly purpose of mass production facilities as: garment (eyelets, rivets, buttons , hooks, pocket rivets, rivet nailing), furniture, automotive, electricity industries etc. MAG-01 striking power can be adjusted between 1 kg -1000 kgs (01-99) and it is an ideal and practical solution for efficient production.

TECHNICAL PROPERTIES	
Power Supply	:220 Volt – 50 hz
Strike Power	:max . 1000 kg / cm <sup>2</sup>
Pillar Diameter	:36 mm
Distance between the spindles	:138 mm
Table lenght	:160x160 mm
Pliers hole	: ¼
T.Tracks	: 8 H 12 DIN 650
Dimensions	: 600x380x200 mm
Weight	: 25 kgs



### MIKRON MAG – 01 MAGNETIC PRESS ‘ GENERAL WORKING PRINCIPLES ’

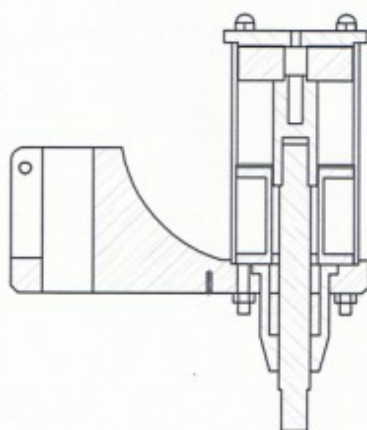
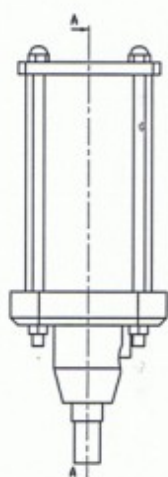
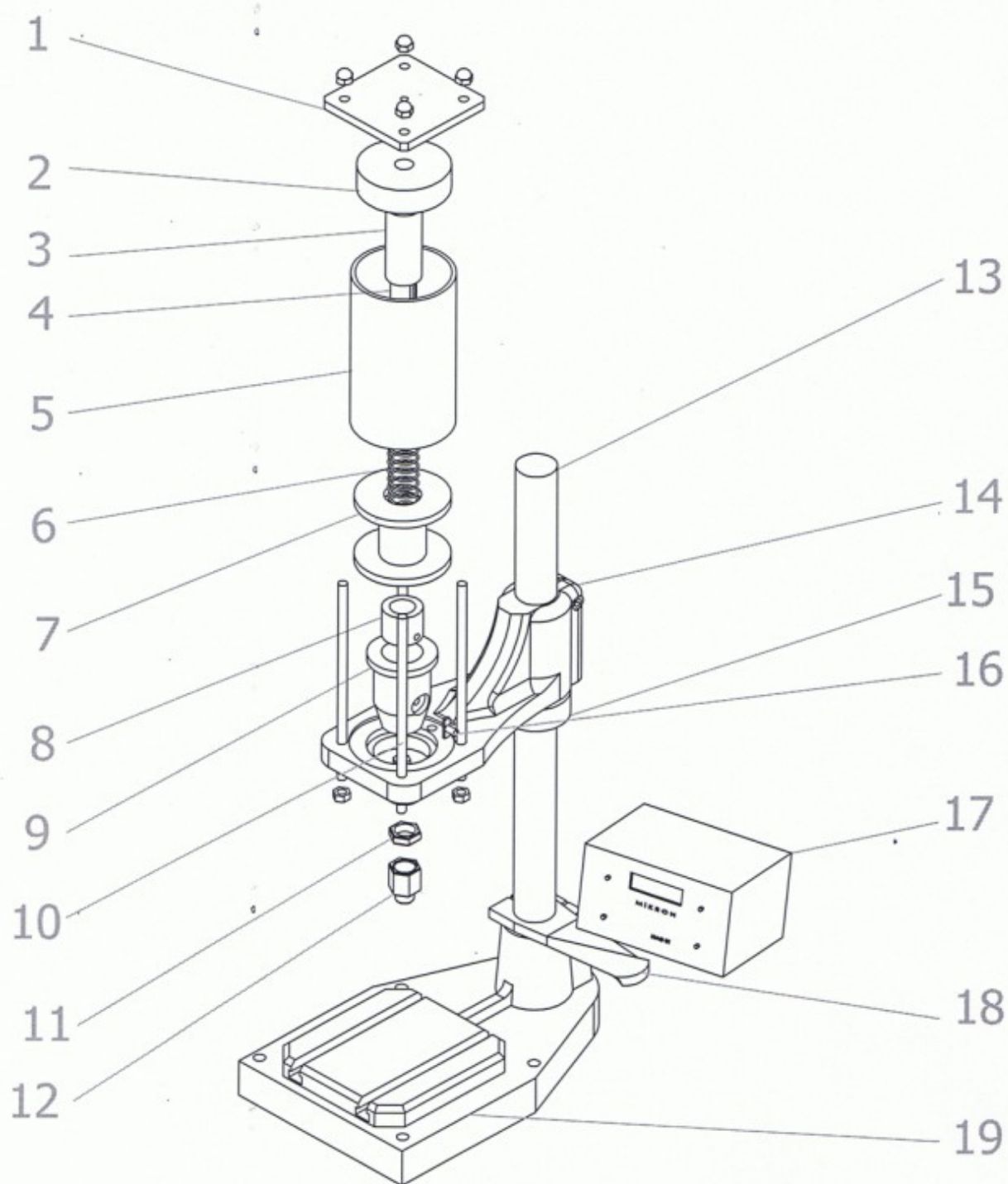
Make electrical connection with putting the plug to 220 V AC socket.

Turn **ON** the fuse inside the electricity panel of the device.

With pressing the **UP** and **DOWN** buttons, the striking power of the machine can be adjusted.

**Pieces / Power** button works in two modes, when pressed once, the screen displays the product quantity; when pressed once again (pressed twice) the screen displays the striking power percentage value.

With pressing the foot pedal, start of the machine can be controlled.



## **MAG-01**

1. PISTON UPPER COVER
2. FELT
3. FELT CONNECTION with MI
4. SHAFTS
5. PIPE PISTON
6. YAY
7. Of TEFLON COIL
8. TEFLON
9. BUCKET
10. Stud
11. NUTS
12. Mapa
13. MILK with the MI
14. MOVING BODY
15. RING
16. T-KAMA
17. ELECTRONIC BOARD
18. PANEL CONNECTION APPARATUS
19. Table



## INSTALLATION OF MAG-01 PRESS

DUE TO PRESS IS PACKAGED AS DISASSEMBLED YOU SHOULD ASSEMBLE SOME PRESS PART BEFORE YOU INSTALL PLEASE FOLLOW THE BELOW STEPS .

1. TURN ON THE CONTROL PANEL HOLDER TO DESIRED POSITION (FIGURE 1) . FIX THE HOLDER TO PILLAR OF THE PRESS BY AN HEX KEY (FIGURE 2) FIX THE CONTROL PANEL TO THE HOLDER THEN SCREW THE NUT (FIGURE 3)



FIGURE 1



FIGURE 2

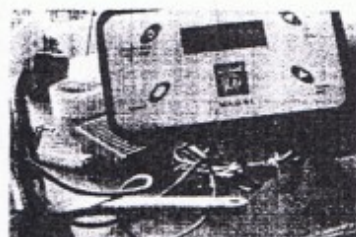


FIGURE 3

2. MAKE ELECTRIC CONNECTION FIRST PLUG THE WIRES TO SOCKETS UNDER THE UP BODY OF THE PRESS AS SHOWN AT (FIGURE 4,5)



FIGURE 4

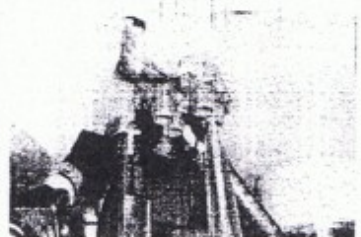


FIGURE 5

3. SETTLE THE SAFETY SENSOR TO ITS LOCATION BY SLIDING ON THE PIN THEN FIX IT TO RIGH POSITION AS SHOWN AT (FIGURE 6,7,8)



FIGURE 6



FIGURE 7



FIGURE 8

NOW YOUR PRESS IS READY TO RUN